

The
FAYETTE



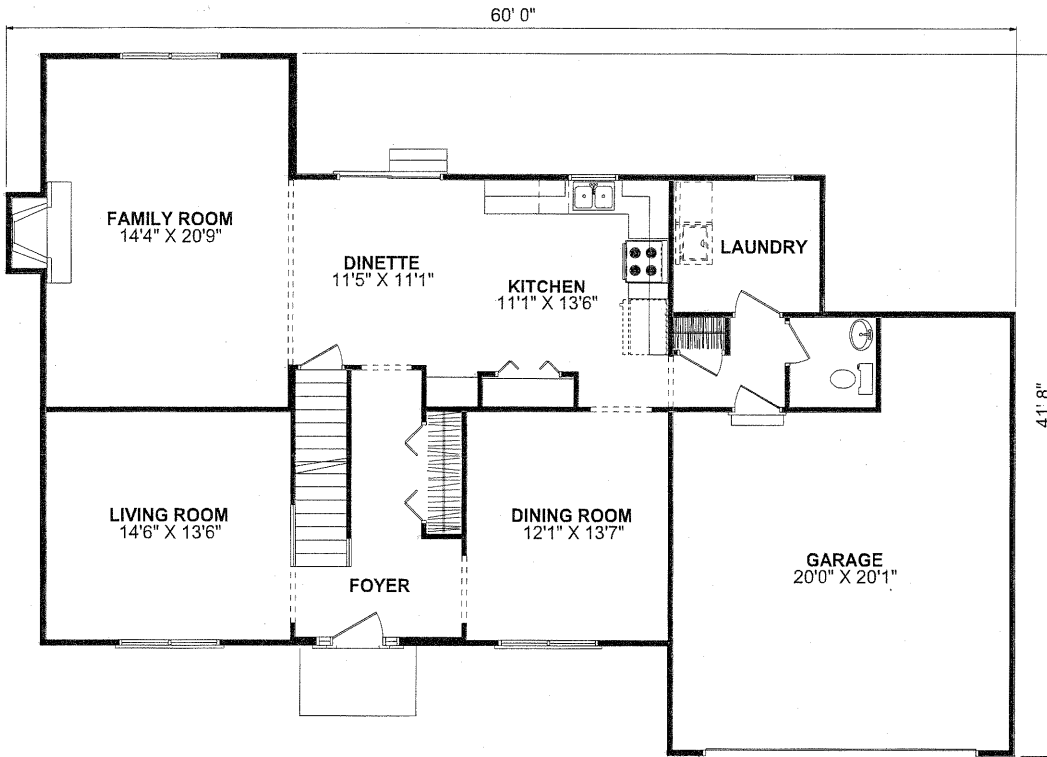
STANDARD FRONT ELEVATION

 **FORRESTER
WEHRLE** HOMES

Since 1965

The FAYETTE

4 Bedroom, 2-1/2 Bath - 2Story - Living Space: 2,476 Sq. Ft. - Basement: 1,316 Sq. Ft.



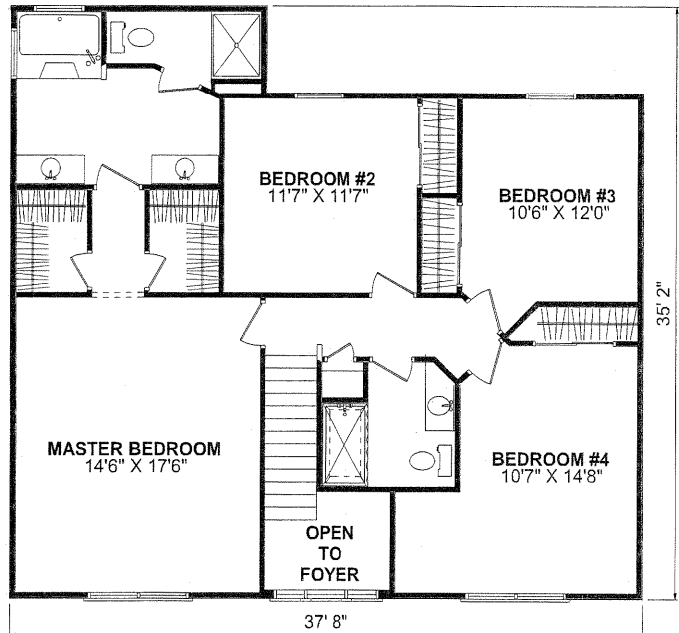
FIRST FLOORPLAN

SPECIAL FEATURES

- OPEN FOYER
- TRANSOM OVER FRONT DOOR
- DOUBLE W.I.C. IN MASTER SUITE
- DENTIL MOLDING ON FRONT EXTERIOR

AVAILABLE OPTIONS

- MASTER BATHROOM
- FRONT ELEVATION



SECOND FLOORPLAN

4331 Keystone Drive - Maumee, Ohio 43537

Phone: 419-841-6691 - Toll Free: 1-877-841-6691 - Fax: 419-841-9608

www.forresterwehrle.com



This sheet is for illustrative purposes only and is not intended to be part of a legal contract. Floor plans and standard features may vary on actual structure and are subject to change without notice. Some items represented, such as landscaping, architectural details, or other special features may be optional and are available only at additional cost.